

Features

- Vitreous China
- 1.6 gpf Gravity
- Round Front Bowl
- 12” (305 mm) rough-in
- Color Matched Trip Lever
- 2” Fully Glazed Trapway
- Sanitary Bar on Bowls
- Limited Lifetime Warranty

Model

7006 Combination  
4865 Abingdon Elongated front bowl



4440 Abingdon 12” Rough-In tank

Shipping weight: 79 lbs (36 kg)

TOILET EXPRESS™

Toilet Express Includes:


- Seat
- Wax Ring
- Tank Bolts
- Floor Bolts
- Installation Instructions

Colors

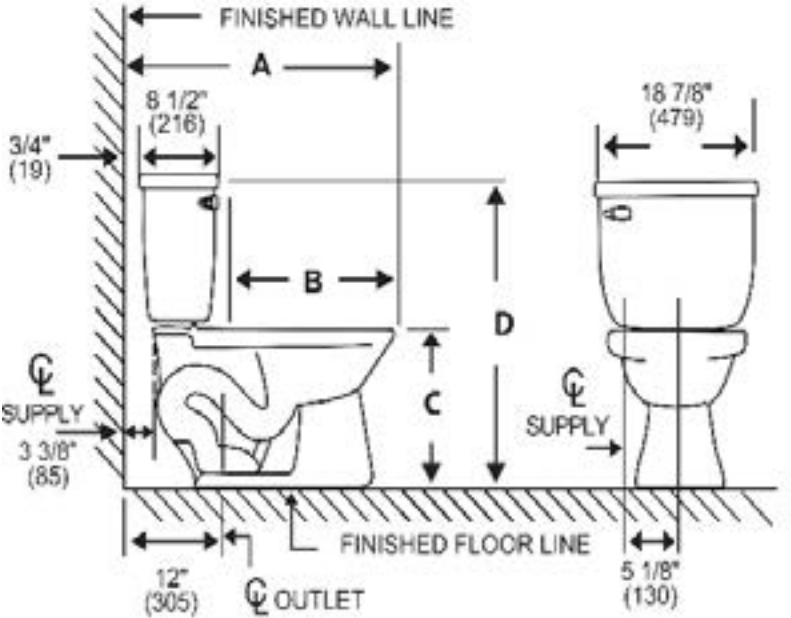
☐ White (130)

Codes & Standards

Meets or exceeds the following:

- ASME A112.19.2
- CSA B45.1
- IAPMO/cUPC 

Specifications



A 29 1/2" (749) B 18 1/2" (470) C 14 3/4" (375) D 29" (737)

Material	Ceramic
Rough-In	12" (305mm)
Water Usage	1.6 gpf
Water Pressure Range	20/50/80 PSI
Flush System	2" Single Flush
Water Surface Area	≥ 125 * 100 mm

Trap Seal	≥ 51 mm
Trap Diameter	≥ 1 7/8"
Shipping Weight	79 lbs (36 kg)
Warranty	Ceramic: Lifetime Tank fittings: 1 year

Dimensions may vary (+) or (-) 1/4". Dimensions shown in parentheses are in millimeters: 25.4 mm = 1 inch. Note: Fixture dimensions are nominal and conform with dimension and performance requirements of ASME A112.19.2-2008/CSA B45.1-08 standards. PSI rating: 20 minimum to 80 maximum per ASME A112.19.2-2008/CSA B45.1-08 standards. Dimensions subject to change or cancellation without notice. Briggs is not responsible for the use of superceded or voided specification information.