

Abingdon™

Two-piece Toilet 4759/4764/4231

BRIGGS®

Features

- Vitreous China
- Boxed rim, jetted bowl
- 12" (305 mm) rough-in
- 1.6 gpf/6.0 Lpf
- Includes color matched plastic trip lever
- Toilet seat sold separately
- Sanitary bar on all bowls
- Limited Lifetime Warranty

Models

4759 Combination:

4860 Abingdon Round front bowl
Shipping weight: 44 lbs (20 kg)

4440 Abingdon 12" Rough-In tank
Shipping weight: 31 lbs (14 kg)

4764 Combination:

4865 Abingdon Elongated front bowl
Shipping weight: 48 lbs (22 kg)

4440 Abingdon 12" Rough-In tank
Shipping weight: 31 lbs (14 kg)

4231 Combination:

4868 Abingdon ComfortFit ADA front bowl
Shipping weight: 51 lbs (23 kg)

4440 Abingdon HET 12" Rough-In tank
Shipping weight: 31 lbs (14 kg)


Optional Tanks:

- 4442 12" R.I. with Right Hand Flush Lever
- 4444 10" Rough-in Tank
- 4445 14" Rough-in Tank



Codes & Standards

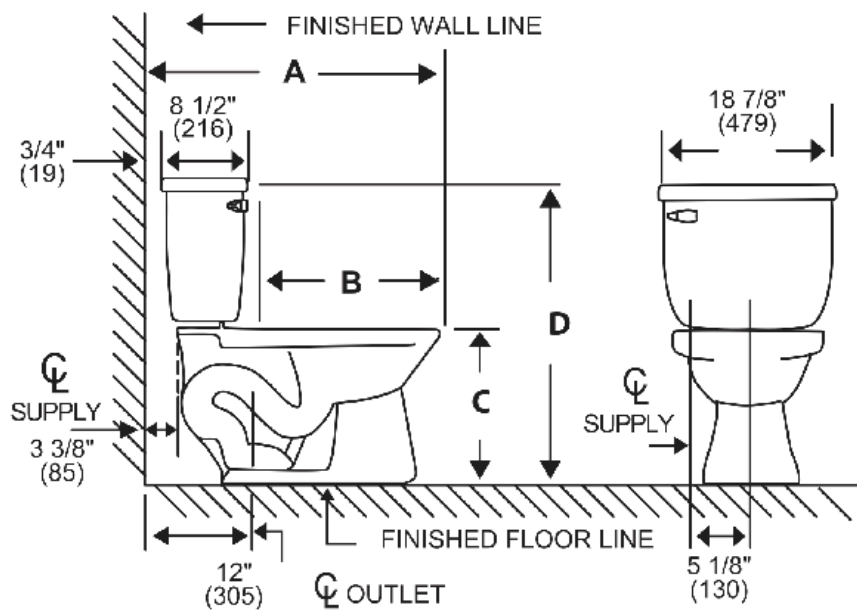
Meets or exceeds the following:

- ASME A112.19.2
- CSA B45.1
- IAPMO/cUPC 

Colors

- ☐ White (130)
- ☐ Biscuit (235)
- ☐ Bone (733)

Specifications



4759	4764	4231
A 27 1/2" (699)	29 1/2" (749)	30 1/2" (775)
B 16 1/2" (419)	18 1/2" (470)	18 1/2" (470)
C 14 3/4" (375)	14 3/4" (375)	17" (432)
D 29" (737)	29" (737)	31 1/2" (802)

Material	Ceramic
Rough-In	12" (305mm)
Water Usage	1.6 gpf
Water Pressure Range	20/50/80 PSI
Flush System	2" Single Flush
Water Surface Area	≥ 125 * 100 mm
Trap Diameter	≥ 1 7/8"

Trap Seal	≥ 51 mm
Shipping Weight	Tank: 14 kg/ PCS Bowl: RF: 20 kg/ PCS EL: 22 kg/ PCS ADA: 23 kg/ PCS
Warranty	Ceramic: Lifetime Tank fittings: 1 year

Dimensions may vary (+) or (-) 1/4". Dimensions shown in parentheses are in millimeters: 25.4 mm = 1 inch. Note: Fixture dimensions are nominal and conform with dimension and performance requirements of ASME A112.19.2-2008/CSA B45.1-08 standards. PSI rating: 20 minimum to 80 maximum per ASME A112.19.2-2008/CSA B45.1-08 standards. Dimensions subject to change or cancellation without notice. Briggs is not responsible for the use of superceded or voided specification information.